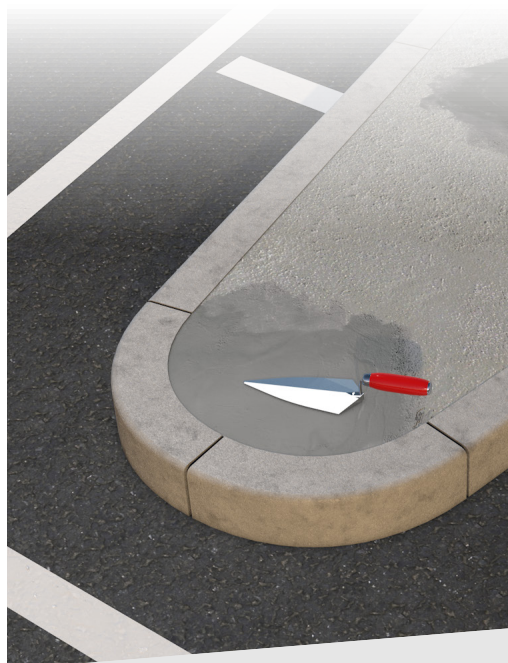
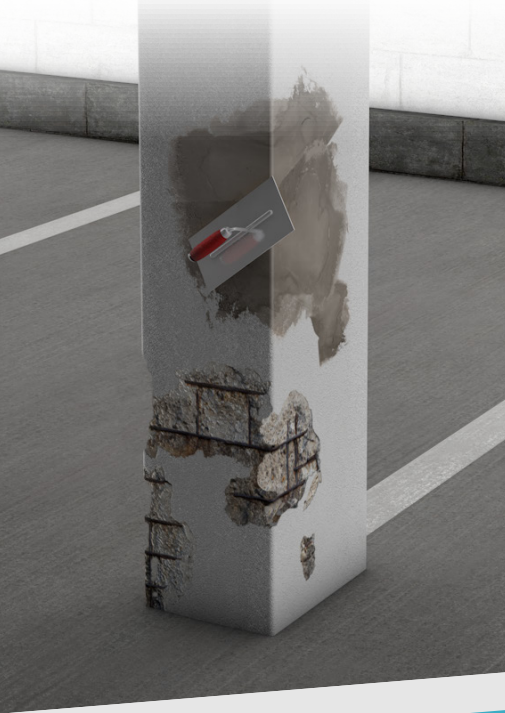


RAPID SET



Envirocrete Rapid Set Mortar is a heavy duty epoxy mortar which has been formulated to enable the rapid repair of concrete surfaces.

- ✓ High early strength development.
- ✓ Excellent adhesion to concrete, stone, asphalt and metal.
- ✓ Provides a anti-slip surface, with excellent abrasion resistance.
- ✓ Resistant to a wide range of chemicals.
- ✓ Tolerant to road salts and freeze-thaw.
- ✓ No need for a primer.
- ✓ Non-shrink and grey in colour.
- ✓ Repair of worn and damaged concrete floors.
- ✓ Restoration of worn stairs and steps.

Assistance

Complete your job with confidence with help from our experts

01234 567 891

Work time



Minimum Cure Prior To Stress 4hrs @ 23°C

Available in
10kg & 5kg Units



PDS

PIPELINE & DRAINAGE SYSTEMS LTD

Head Office, 361-365 Coleford Road, Darnall, Sheffield, S9 5NF, UK.